

Power Connection Kit Instructions

EC-120



2911 Lake Forest Rd., P.O. Box 6928, Tahoe City, CA 96145 530/583-8888
summiticemelt.com info@summiticemelt.com

EverClear™ 812 (120Vac) and 822 (208-277Vac)
Self-Regulating Heater Cable

WARNING!

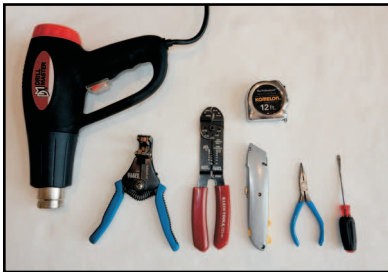
All electrical wiring, including GFCI (Ground Fault Circuit Interrupters) must be installed in accordance with the National Electrical Code and local codes by a qualified installer. When utilizing a torch or heat gun, verify that area is not hazardous at the time of installation.

WARNING!

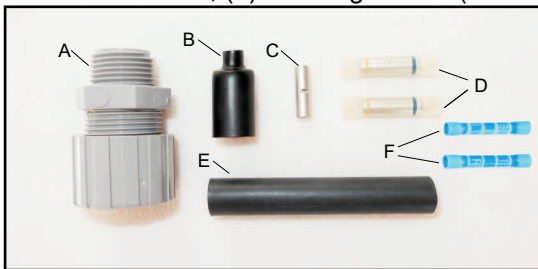
Disconnect all power before installing or servicing heating cable. Failure to do so could result in personal injury, death, or property damage. Heater cable must be installed by a qualified person in accordance with the National Electrical Code, NFPA 70.

NOTE: Ensure you have the correct Power Connection Kit for EverClear 812 and 822.

Tools Required: Heat gun or propane torch, wire strippers, crimper, utility knife, needle nose pliers, screwdriver, tape measure:



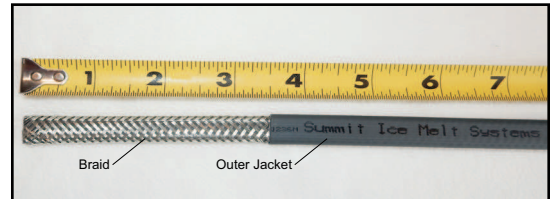
Kit Contents: A: (1) 1/2" NPT Compression Cable Assembly, B: (1) Heat Shrink Cap, C: (1) Uninsulated Barrel Connector, D: (2) Insulated Step-Down Barrel Connectors, E: (1) 3" x 1/2" Heat Shrink Tube, F: (2) Insulated Blue Barrel Connectors, (2) Warning Labels (not shown):



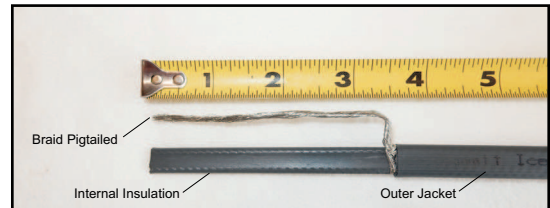
1. Slide (4) components of Compression Cable Assembly onto cable in order shown:



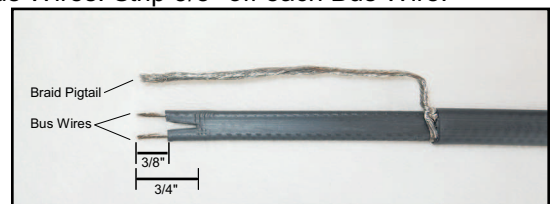
2. Score cable outer jacket 3-1/2" from cable end and remove jacket to expose Braid. CAUTION: Do not damage the Braid or Internal Insulation:



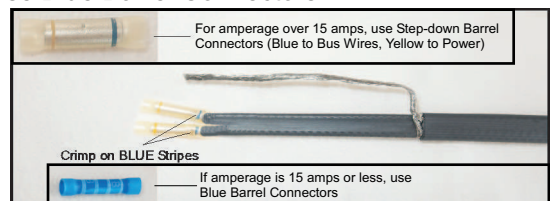
3. Pick the braid apart near the outer jacket with the screwdriver and pull the cable through opening in the Braid. Twist Braid into a Pigtail:



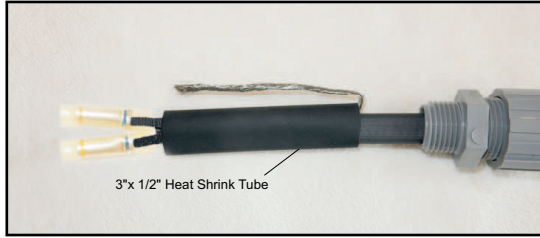
4. Using the Utility Knife, cut a 3/4" deep notch between the Bus Wires. Strip 3/8" off each Bus Wire:



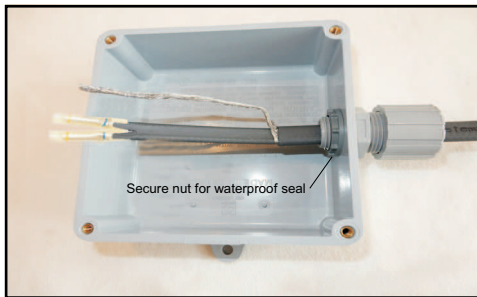
5. If amperage is over 15 amps, slide the BLUE striped ends of the (2) Insulated Step-Down Barrel Connectors over the bare portion of the Bus Wires. Crimp the connectors onto the Bus Wires across the blue stripes. If amperage is 15 amps or less, use Blue Barrel Connectors:



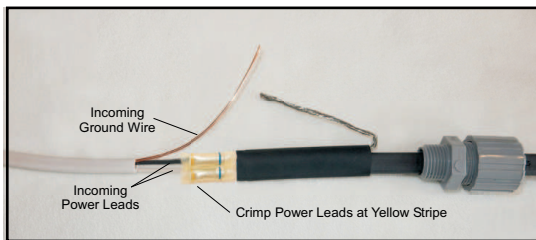
6. Slide the 3" x 1/2" Heat Shrink Tube over and past Insulated Step-Down Barrel Connectors:



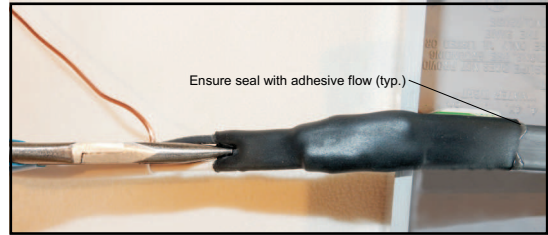
7. Insert assembly into bottom of NEMA 4 or 4X Electrical Junction Box (provided by others) and tighten nut and all fittings to create a watertight seal. Junction Box should be protected from weather, if possible:



8. Feed incoming Power Leads through watertight conduit and connector (not shown for clarity). Strip Power Leads to expose 3/8" length of bare conductor. Insert bare conductors into open end of Insulated Barrel Connectors. Crimp across Yellow Stripe: (Junction Box not shown for clarity)

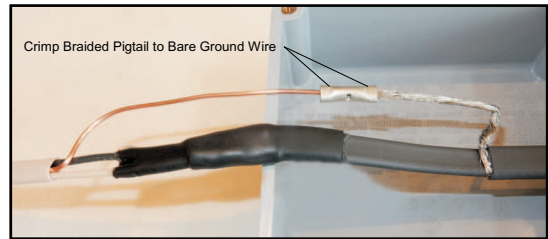


9. Slide and center 3" Heat Shrink Tube over the Insulated Step-Down Barrel Connectors. Apply heat evenly to shrink tubing around Heating Cable, Barrel Connectors, and Power Leads: (Waterproof Conduit for Power Supply by others not shown for clarity.)



10. While the Heat Shrink Tubing is still hot, gently squeeze the tubing between the Power Leads with Needle Nose Pliers. The Heat Shrink Tubing must remain visibly sealed when the pliers are removed. If the Heat Shrink Tubing does not remain sealed, reheat the tubing and try again.

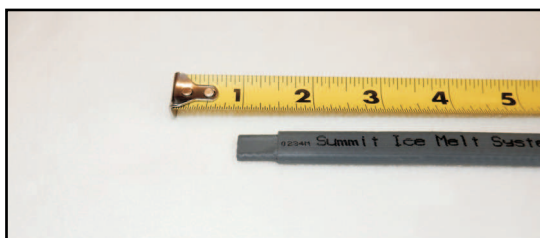
11. Insert Braided Pigtail into one end of the Uninsulated Barrel Connector and crimp it. Insert stripped end of the Ground Wire into the other end of the Barrel Connector and crimp it:



12. Carefully push connected wires into Junction Box and secure cover. Ensure a drip loop in the exiting cable under Junction Box to prevent seepage.

End Seal Instructions

13. To terminate the far end of the Heater Cable, score cable Outer Jacket 1/2" from cable end and remove Jacket. Unravel and trim the Braid 1/2" from end of cable. Remove all strands of Braid:



14. Slide Heat Shrink Cap over end of cable:



15. Apply heat evenly to shrink tubing around Heating Cable. Ensure seal with adhesive flow:

