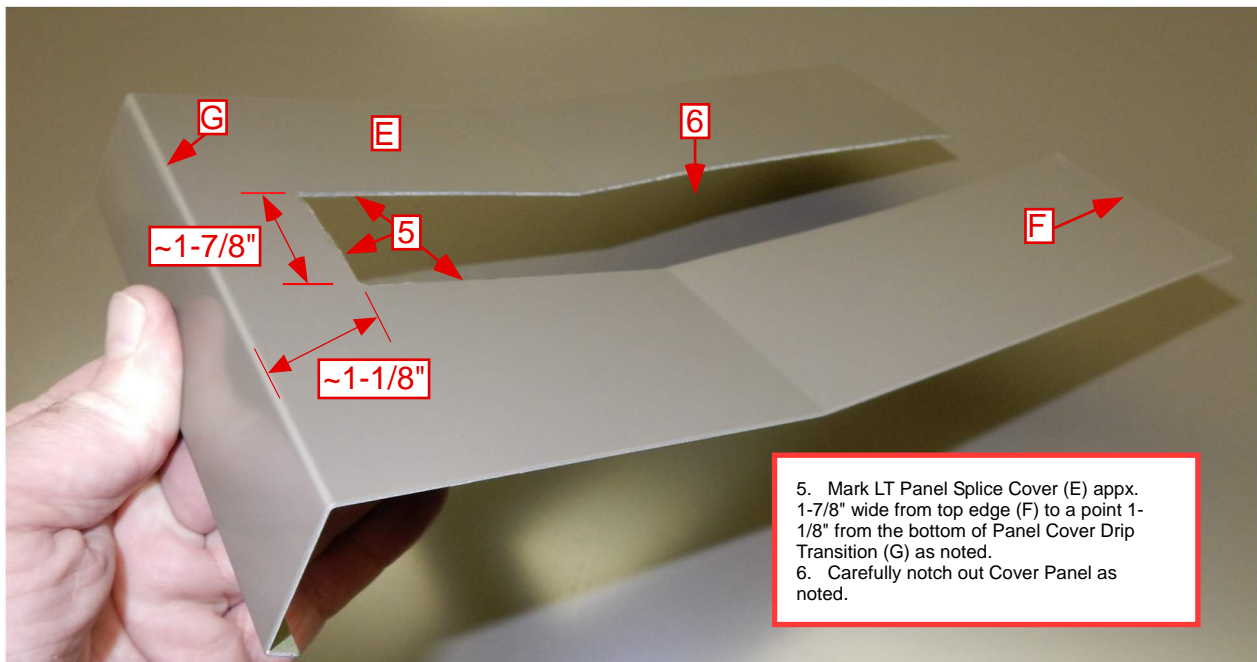
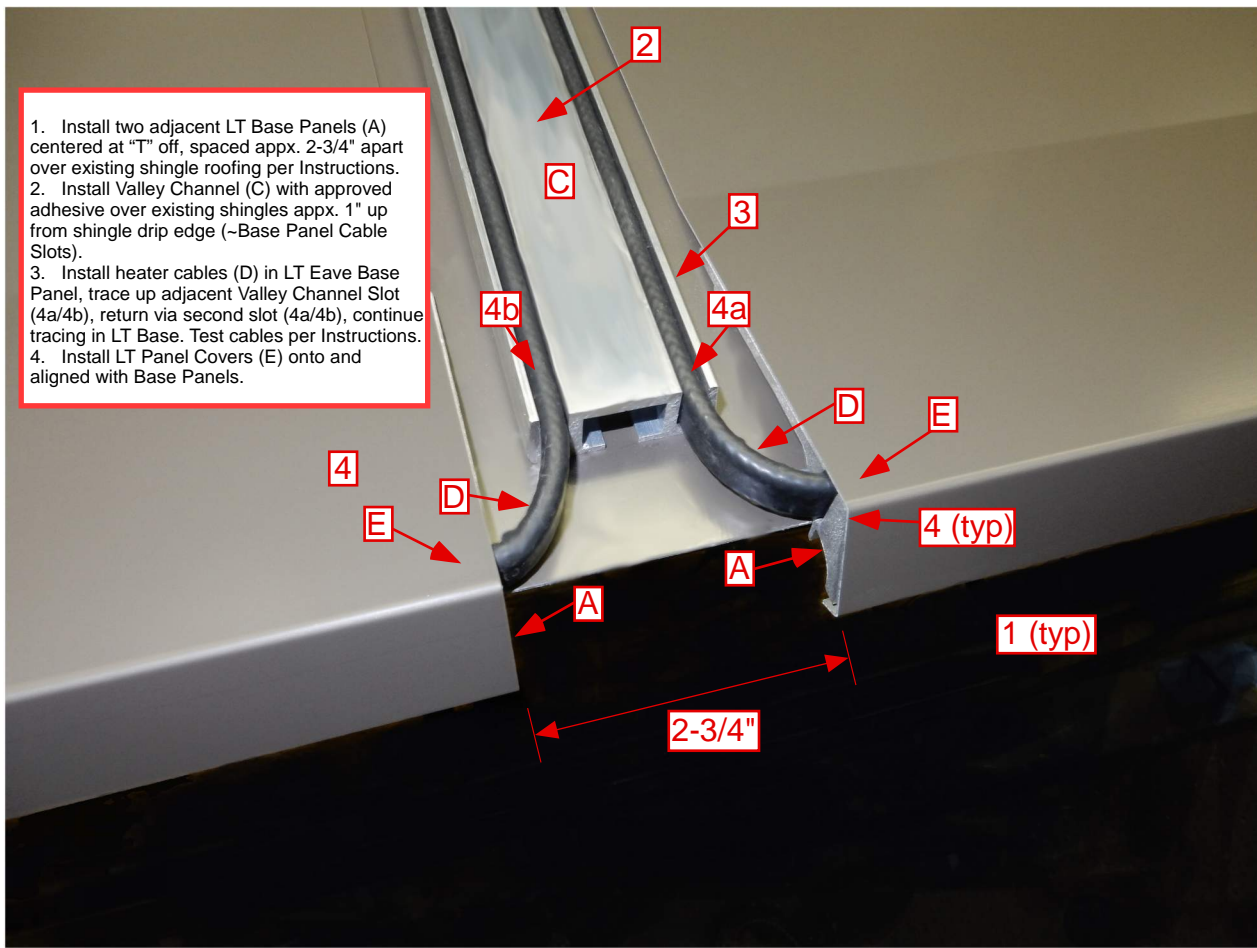


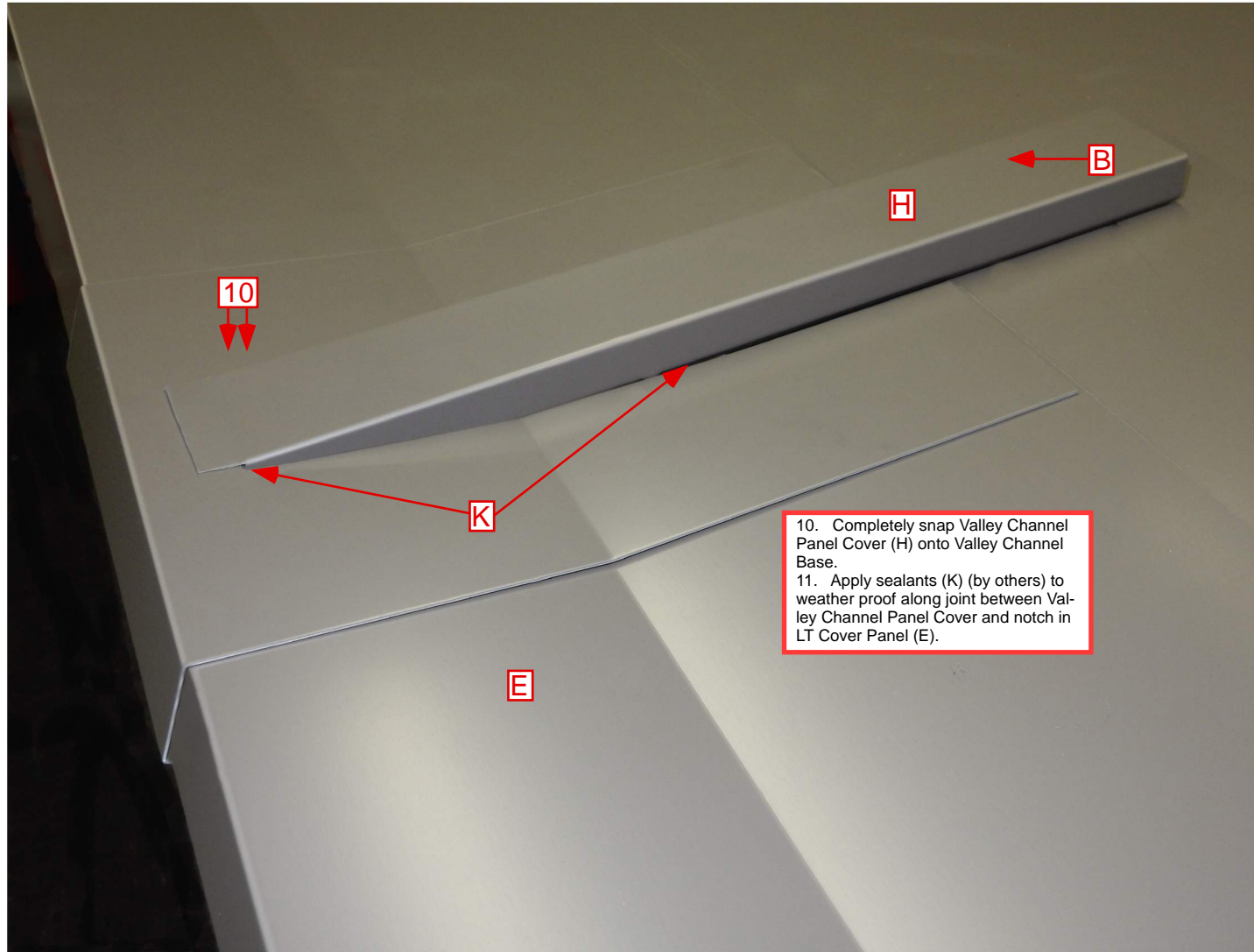
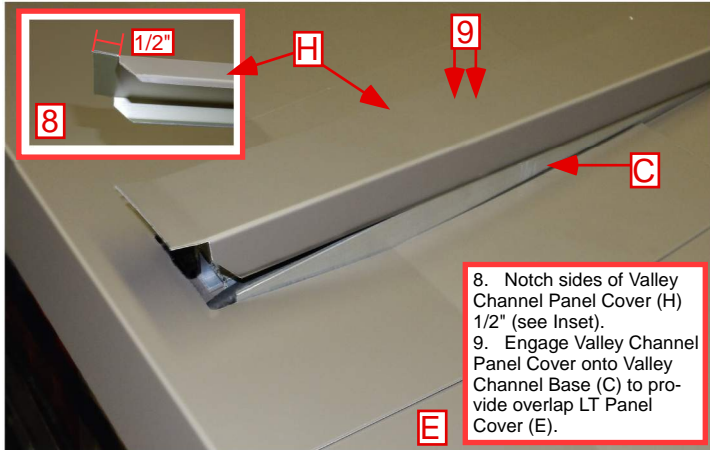
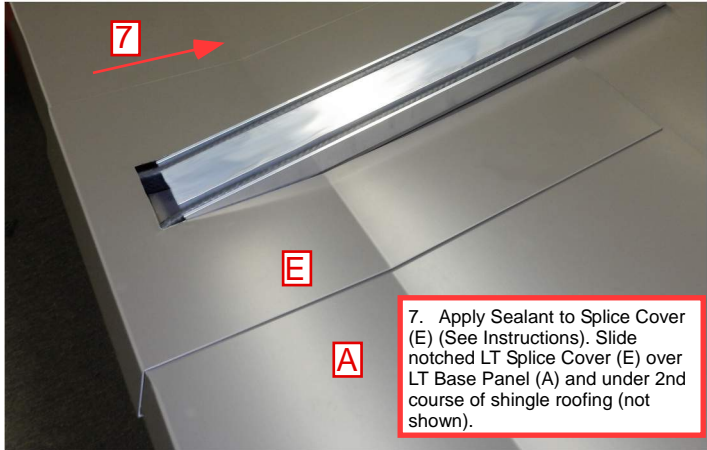
# Summit Ice Melt Systems LT<sup>®</sup> Eave to Valley Channel<sup>®</sup> Transition

T-Offs permit connection of LT Eave Panels to Vertical Valley Channel Panels on existing shingle roofs (not shown)

1. Install two adjacent LT Base Panels (A) centered at "T" off, spaced approx. 2-3/4" apart over existing shingle roofing per Instructions.
2. Install Valley Channel (C) with approved adhesive over existing shingles approx. 1" up from shingle drip edge (~Base Panel Cable Slots).
3. Install heater cables (D) in LT Eave Base Panel, trace up adjacent Valley Channel Slot (4a/4b), return via second slot (4a/4b), continue tracing in LT Base. Test cables per Instructions.
4. Install LT Panel Covers (E) onto and aligned with Base Panels.



5. Mark LT Panel Splice Cover (E) approx. 1-7/8" wide from top edge (F) to a point 1-1/8" from the bottom of Panel Cover Drip Transition (G) as noted.
6. Carefully notch out Cover Panel as noted.



**Summit Ice Melt Systems, Inc.**

*Thermodynamics analyzed. Applied.™*

Systems are protected under U.S. Patents #8,946,601, #10,604,937, #10,072,422, and other patents pending.

P.O. Box 6928 Tahoe City, CA 96145-6928  
Ph: 530-583-8888